



*Maison Shalom
International*



ANNUAL REPORT 2024





*Maison Shalom
International*

© COPYRIGHT 2025



CONTENTS

Statement from the President of the Board of Directors	4
1. 2024 In Brief	5
2. Vision – Mission – Guiding Principles	6
2.1 Vision	6
2.2 Mission	6
2.3 Guiding Principles	6
2.4. Organizational Chart	7
3. Background	8
4. Education	9
4.1. Context	9
4.1.2. Achievements	10
4.2. Preschool and Primary	11
4.3. Secondary	13
4.4. University	17
4.5. Vocational Trainings	19
4.6. Other activities in education	22
4.6.1. Online learning centers	22
4.6.2. Académie Ubuntu	23
4.6.3. Education des Filles pour un Avenir Meilleur (EDUFAM)	25
4.6.4. Ecole Sainte-Anne de Kigali (ESAK)	27
5. Economic Support	30
5.1. Context	30
5.2. Achievements	31
5.2.1. Income Generating Activities	31
5.2.2. Community Savings and Internal Credit	32
5.2.3. Startup Kits	32
5.2.4. Entrepreneurship Training	32
6. Psychosocial Support	35
6.1. Context	35
6.2. Achievements	36
6.2.1. Psychological Assistance	36
6.2.2. Social Assistance	36
7. Maison Shalom Offices	40
7.1. Kirehe	40
7.2. Huye	43
8. OASIS OF PEACE	45
8.1. Elite Design	45
8.2. Hozagara Reception Center in Mahama	47
9. Finances	58
10. Acknowledgements	49



Statement from the Chair of the Board of Directors



Dear Friends and Partners

It has been nine years since we rebuilt our lives in Rwanda, carrying the hope and resilience of those shaped by exile. Nine years in which we have learned, together, to overcome the most difficult trials, to rise to seemingly insurmountable challenges, and to emerge stronger, more united, and more determined than ever. These years have been marked by resilience that would not have been possible without the support of each and every one of you. Today, I take a moment to express our profound gratitude for your unwavering solidarity and steadfast support.

We know that these years have not been easy, and there were times when the path seemed fraught with obstacles. But you, our friends and partners, have been the pillars on which we have relied.

Your commitment, your resources, and your ideas have made all the difference. Every project, every initiative, and every action we have been able to implement has been made possible because of you. And for that, we can only say a heartfelt thank you.

Yet, despite all that we have achieved together, we cannot ignore the realities that continue to destabilize our Great Lakes region. The human tragedies we face are devastating, which is why our mission is more crucial than ever. We strive to build a generation of leaders—men and women who will choose to be architects of peace, unity, and love.

In 2024, more than 350 young people regained access to education. Among them, 197 students were reintegrated into the school system, 75 received support for their academic progression, and 23 were able to pursue higher education despite significant obstacles. Additionally, over 270 learners completed vocational training, enhancing their employability and independence. Académie Ubuntu, with its 182 beneficiaries, played a central role in this effort by offering both human and technical training essential to their future.

The EDUFAM project, which recently concluded, enabled 155 girls to return to school in 2024, with 122 successfully passing the national exam. This initiative has had a profound impact on their lives, opening doors to a brighter future. In parallel, 113 beneficiaries—more than half of whom were women—received economic grants to strengthen their autonomy and support their projects. Moreover, 396 individuals benefited from psychosocial support, an essential service for their mental and social well-being, often eroded by years of hardship.

Finally, the launch of the Middle Years Program (MYP) at École Sainte-Anne de Kigali in August 2024 provided a rigorous learning environment for students aged 11 to 16, preparing a new generation to meet the challenges of tomorrow.

Dear friends, because of you, every number represents more than a statistic. It reflects transformed lives, realized dreams, and restored dignity. We sincerely thank you for being the catalysts of this change, for your love, support, and commitment. This journey belongs to you as much as it does to us. And together, we will continue to move forward, to dream, and to build a future where everyone has the opportunity to thrive.

With my deepest gratitude,

SILAS MATAMBERE
Sil Matambere



1.2024 IN BRIEF

212 • PRESCHOOL EDUCATION

Support for children aged 3-14 from the most vulnerable refugee and Rwandan families in urban areas of Rwanda.

724 • ECONOMIC SUPPORT

Training for refugee households and the most vulnerable Rwandans on managing income-generating activities within solidarity groups. They are then supported with equipment grants to earn a dignified living in exile, with a focus on women and youth.

241 • SECONDARY EDUCATION

Support for the brightest refugee youth aged 14-25 from the Mahama camp and the host community. They are enrolled in public boarding secondary schools.

1447 • PSYCHOSOCIAL SUPPORT

Refugees in urban areas receive psychological and social support, particularly due to trauma.

334 • VOCATIONAL TRAININGS

Support for young refugees and those from the most vulnerable families, aged 19-30, who do not have the opportunity to pursue formal education. They learn trades, and those who are not employed after training receive start-up kits to create small businesses.

184 • ACADEMIE UBUNTU

Founded by the Burundian diaspora and friends of Maison Shalom, this academy addresses the needs of refugees by offering diverse training programs, including resilience and leadership, human rights awareness, and conflict resolution.

23 • UNIVERSITY

Reintegration of refugee youth having completed secondary education but without the opportunity to pursue university studies in Rwanda, they are selected based on their academic performance.

3908 • ELITE Center Users

Refugees participate in various activities, ranging from IT and online research to socio-cultural initiatives. This space enables them to acquire essential skills, broaden their horizons, and enhance their competitiveness in the job market.

2. VISION – MISSION

2.1 VISION



Every human being lives with dignity and thrives fully in every society.



2.2 MISSION

Promote human development by providing psychosocial, educational, and economic support to the most vulnerable, empowering them to become agents of positive change in their communities

2.3. GUIDING PRINCIPLES

DIGNITY



We believe that every human being has intrinsic value, regardless of their social status, socio-economic situation, or ethnic, political, or religious affiliation.



HARMONY

We embrace our differences as a source of strength and inspiration. We live together as members of the same family, respecting each other's freedoms, beliefs, and opinions.

COMPASSION



We share in the suffering of others without pitying them and help them regain their footing.



HUMILITY

We acknowledge our limitations and remain open to any constructive contributions from our partners to improve our services

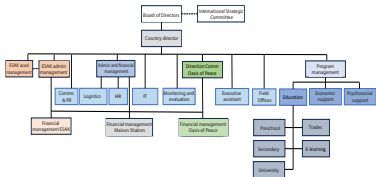
INTEGRITY



We use the resources received for the common good and with transparency toward all our partners.



2.4. ORGANIZATIONAL CHART





3. BACKGROUND

Maison Shalom is a humanitarian organization founded by Marguerite Barankitse in 1993 in Burundi. Its mission is to restore dignity to war orphans, children affected by AIDS, street children, and children in difficult situations. Since its inception, Maison Shalom has been dedicated to transforming lives through its commitment to the most vulnerable.

The political crisis of 2015 led to the closure of Maison Shalom's activities in Burundi. The organization then established itself in Rwanda, where it supports refugees and the host community in key areas, including education, economic empowerment, and psychosocial support.

Maison Shalom has also set up community centers and training programs to help refugees and local community members thrive and become self-reliant. According to UNHCR, Rwanda alone hosts 134,915 refugees, with 90% living in refugee camps.

Given the precarious living conditions of refugees, collaboration between the government and its partners is crucial. Together, they implement various initiatives aimed at improving the living conditions of refugees in exile while promoting socio-economic inclusion and preparing them for a sustainable and constructive return to their home countries.

Maison Shalom strives to restore dignity and hope to individuals and families displaced by conflict. The organization prioritizes education as a key tool for empowerment. These initiatives equip individuals, particularly young people, with the skills needed to rebuild their lives and contribute to their communities.

Through its efforts, Maison Shalom continues to embody its mission: "Love and solidarity can overcome hatred and division," demonstrating the power of resilience and community-driven solutions.





4. EDUCATION



4.1 CONTEXT

The situation of refugees in the Mahama camp is alarming. With 67,653 refugees, 51% of whom are under 18, the majority live in precarious conditions, making it crucial to find solutions to improve their quality of life.

Maison Shalom plays a vital role in supporting the most vulnerable families, whether they are refugees or from the host community. One of its key efforts is facilitating access to education for their children.

Education is a fundamental pillar for the development and integration of refugee children. By providing them with this opportunity, we enable them to build a better future and contribute positively to society.



4.1.2. ACHIEVEMENTS

In 2024, significant progress was made in the education sector, with a total of 810 beneficiaries across different levels:



4.2. PRESCHOOL AND PRIMARY

No	Location	Preschool			Primary			Grand Total
		Boys	Girls	Total	Boys	Girls	Total	
1	Kigali City	28	18	46	18	25	43	89
2	BUGESERA District	14	11	25	8	10	18	43
3	HUYE District	14	11	25	10	15	25	50
4	Ecole Sainte Anne de Kigali	2	2	4	4	7	11	15
5	KAMONYI District	2	0	2	1	1	2	4
6	RWAMAGANA District	0	1	1	0	1	1	2
7	RUBAVU District	0	0	0	0	1	1	1
8	MUHANGA District	2	1	3	4	1	5	8
	Total							212

4.2.1 IMPACT

- 212 students received basic educational support, ensuring their entry into the school system.
- This support has facilitated access to basic education for young children, promoting their physical and mental growth.





« At the beginning, during the first term, my daughter Ishimwe Sarah struggled to adjust. She wouldn't talk to other children or teachers and was constantly afraid. It was really difficult for me to see her in that state. But in the second term, everything changed. Things improved significantly. Every day, when she comes home, she is full of joy and tells me everything she has learned. She now talks with her classmates and actively participates in class. Her attitude has changed a lot, and I am very pleased with her progress. École Sainte-Anne de Kigali has truly brought a beautiful transformation to her life. My daughter has learned many important things, such as good manners, sharing, and above all, love among people. To me, these values are essential, and I am proud of the education she is receiving here.»
Modeste Nahimana - Former Child of Maison Shalom - Burundian Refugee

4.3. SECONDARY

The criterion of excellence is prioritized in the selection of beneficiaries for secondary education. Candidates are chosen from residents of the Mahama refugee camp and the host community.

The selected youth are then placed in technical and scientific boarding schools, providing them with optimal study conditions.





4.3.1 ACHIEVEMENTS

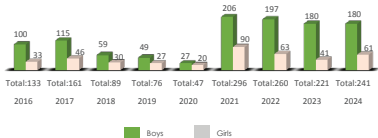
Maison Shalom has supported secondary school students by covering tuition fees, providing school kits, and covering transportation and healthcare expenses.

The students were placed in boarding schools selected based on the quality of supervision, teaching, and available academic programs, while also respecting their preferences.



NUMBER OF SECONDARY SCHOOL STUDENTS

SUPPORTED BY MAISON SHALOM (2016-2024)



4.3.2 RESULTS AND IMPACT

Through the support for secondary education, an overall success rate of 89.1% has been achieved. For the national graduation exam, this rate stands at 90.1%.



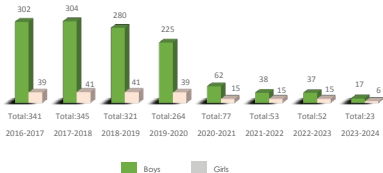
« I had the opportunity to study at Collège Saint-Bernard Kansi in Huye District, where I followed a rigorous program covering nine subjects, including mathematics, biology, Kinyarwanda, physics, and English. Biology was my favorite subject, as it truly fascinated me and motivated me to excel. In the national exam, I achieved an outstanding score of 51 out of 53, an accomplishment I am very proud of. Through the unwavering support of Maison Shalom, I am now confident that I can complete my studies and fulfill my dream of becoming a pilot. Maison Shalom has not only transformed my educational journey but has also given me the strength and resources to aim higher than I ever imagined. »
Carmella NTIHARIZWA –Burundian Refugee



4.4. UNIVERSITY

23 students have pursued higher education to develop advanced skills.

**NUMBER OF STUDENTS SUPPORTED
BY MAISON SHALOM (2016-2024)**



During the 2024 academic year, 10 young students graduated in the following fields: Computer Science, Education (English-French), Topography, Business Management, Tourism, and Rural Development.



«When I was forced into exile, I had no idea how I would be able to continue my secondary education. Fortunately, through the support of Maison Shalom, I was able to pursue my studies here in Rwanda.

After completing secondary school, I had the opportunity to continue my university education in the Business Economics department within the Faculty of Banking and Finance. Once again, Maison Shalom was by my side, supporting me throughout my academic journey.

Today, with my degree in hand, I realize just how essential this support has been in my life. I am deeply grateful to Maison Shalom for enabling me to build a future despite the challenges I faced. »

Claude NIYONZIMA – Burundian Refugee

4.5. VOCATIONAL TRAININGS

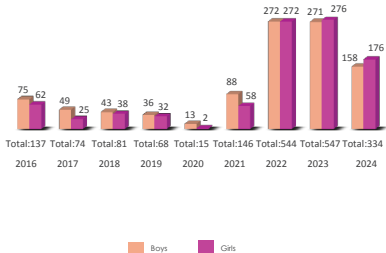




334 learners have acquired practical skills to enhance their employability. As part of their training, they also received a skills enhancement program focused on entrepreneurial management.

Refugee and Rwandan youth who completed vocational training have significantly improved their competitiveness in the job market through tailored job preparation activities. These activities include CV writing, cover letter drafting, mock job interviews, as well as internships and company visits organized by the employment office in partnership with various businesses.

NUMBER OF YOUTH SUPPORTED BY MAISON SHALOM IN VOCATIONAL TRAINING (2016-2024)





The table below presents the various training fields covered in 2024. Some learners are enrolled in Maison Shalom's training centers (Giriteka TVET School), while others are placed in external training centers based on their chosen fields of study.

NUMBER OF YOUTH SUPPORTED BY MAISON SHALOM IN VOCATIONAL TRAINING IN 2024						
Field of study	Giriteka TVET School			External Training center		
	F	M	TOTAL	F	M	TOTAL
Agriculture	40	20	60	0	0	0
Poultry Farming	3	7	10	0	0	0
Heavy Machinery	0	0	0	3	27	30
Leather Craft L1	6	3	9	0	0	0
Leather Craft L2	4	10	14	0	0	0
Auto -Engine A	0	0	0	1	24	25
Auto -Engine B	0	0	0	1	14	15
Hairdressing and Aesthetics	19	7	26	13	7	20
Cutting and Sewing L1	24	1	25	0	0	0
Masonry	0	0	0	4	4	8
Carpentry	1	10	11	0		0
Multimedia	0	0	0	3	7	10
Cutting and Sewing L2	0	0	0	15	0	15
Welding	0	0	0	0	7	7
Culinary Arts	22	27	49	0	0	0
Total	119	85	204	40	90	130



4.6. OTHER ACTIVITIES CARRIED OUT IN EDUCATION

Cross-cutting activities are organized around two major interventions.

4.6.1. ONLINE LEARNING CENTER

The Online Learning Center offers several services, including online courses, online opportunity searches, and internet research. Approximately 3,908 young refugees (1,421 women and 2,487 men) have benefited from the services provided by the e-learning center.



a) Computer Courses

Computer courses are offered to different categories of people. In total, 228 individuals have received support for computer courses, as shown in the following distribution:

- Vocational trainees: 108 beneficiaries, including 65 women and 43 men;
- 46 Community workers ;
- 52 Youth on Vacation: 34 women and 18 men ;
- 22 Beneficiaries of the Académie Ubuntu: 5 women and 17 men.

b) Online Scholarship Opportunities :

58 young refugees, including 25 women and 33 men, have applied online for university scholarships. Some of the universities include ; Kepler, African Leadership University (ALU), University of Rwanda (UR), ASHESI, United States International University (USIU), UNIVR, and Cornerstone.



4.6.2. ACADÉMIE UBUNTU



Académie Ubuntu was established in 2019 by members of the Burundian diaspora and friends of Maison Shalom. It is built on an innovative yet deeply rooted concept: education based on the spirit of Ubuntu. This initiative addresses both moral and security imperatives, aiming to strengthen the resilience of refugees and vulnerable populations.

The academy offers cross-cutting training structured around four main modules: Human Rights, Ubuntu Education, Resilience and Leadership, and Mosquito Control. It is designed to be an inclusive and accessible space, welcoming participants regardless of their status or level of education. A lack of academic or pedagogical training is not a barrier to participation.

These modules provide access to knowledge, encourage experience-sharing, and foster critical thinking for personal and collective empowerment. Moreover, Académie Ubuntu promotes social networking and interaction, helping participants find their place, refine their perspectives, and expand their knowledge in a spirit of solidarity and mutual support.

The workshops are completely free, certified, and held year-round, from January to December, both online and in person. Anyone who completes at least half of the modules is eligible for a "learner's certificate."



The Académie Ubuntu has trained 184 beneficiaries, including 47 women and 137 men. These training sessions culminated in the awarding of certificates of achievement, recognizing the participants' engagement and the skills they acquired.

The following table provides details on the use of the computer learning center.

COMPUTER LEARNING CENTER			
SERVICE	GENDER		
	F	M	TOTAL
Computer Courses (Vocational Training, Community workers, Youth on Vacation, Académie Ubuntu)	150	78	228
Online Applications (Kepler, African Leadership University, University of Rwanda, ASHESI University, United States International University Africa (USIU), Couloir universitaire UNIV'R 2024, Cornerstone)	25	33	58
Internet Research	987	1889	2876
Photocopying, Printing, and Document Scanning	212	350	562
Académie UBUNTU	47	137	184
Total	1421	2487	3908

CHALLENGES

- i) The demand for support far exceeds the available resources.*
- ii) Limited employment opportunities for university graduates.*
- iii) Insufficient funding for university education, as donors prioritize short-term training programs.*



4.6.3. EDUCATION DES FILLES POUR UN AVENIR MEILLEUR (EDUFAM)

Since 2020, Maison Shalom has implemented a project titled "Education des Filles pour un Avenir Meilleur (EDUFAM)" in the Great Lakes region. This project was funded by the Paul Génin-Lajoie Foundation and the Centre for International Studies and Cooperation. After four years of implementation, the project has now been completed.

Throughout its implementation, the project supported the education of 1,926 girls, distributed as follows:

- School Enrollment : 155 girls were enrolled in secondary education, and among them, 122 passed the national secondary school completion exam (S6).
- Remedial Classes and Reintegration : School support programs were organized for 198 girls, enabling them to return to school and catch up on missed learning
- Targeted Academic Support: 1,573 students in classes preparing for national exams received specific assistance. This was made possible by the dedication of teachers who provided additional lessons.

As part of economic support, the project assisted 585 households organized into 45 groups. These groups engaged in various economic recovery activities, including agropastoral work, basket weaving, pottery, and various commercial ventures.





GALLERY





4.6.4. ÉCOLE SAINTE-ANNE DE KIGALI (ESAK)



For the 2023-2024 school year, École Sainte-Anne de Kigali (ESAK) has continued to pave the way toward educational excellence while navigating the challenges of an ever-evolving environment. By focusing on students, the IB (International Baccalaureate) program, and Ubuntu values, ESAK has successfully turned challenges into opportunities. Notably, ESAK has seen a steady increase in student enrollment, with 76 students in 2023-2024 and 135 projected for 2024-2025, including 15 scholarship recipients from vulnerable Rwandan families and refugee communities.

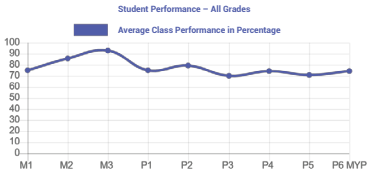
ESAK's vision and mission are to "Educate global citizens, builders of a harmonious and reconciled Great Lakes region." This guiding principle shapes every action of the school. In a nurturing environment, ESAK strives to provide an inclusive education where academic, artistic, and human skills flourish in harmony. Staying true to this vision, the school treats all students equally, regardless of their background or status, whether they come from privileged or disadvantaged communities.



The school has set the following key priorities:

- **Strengthening Language Skills:** Intensive French support has enabled students to improve their expression and interaction in a demanding Francophone environment.
- **Pedagogical Innovation:** Interdisciplinary projects have encouraged the development of critical and creative thinking.
- **Well-being and Inclusion:** Cultural diversity has been emphasized, along with tailored psychological support.
- **Global Citizenship:** The integration of technology and educational excursions has broadened students' horizons.

The following graph summarizes the academic performance for the 2023-2024 school year.



However, the school faced several challenges, including:

- **Costs:** Active efforts to secure external funding, combined with the implementation of income-generating projects, have helped sustain the school's development momentum.
- **Infrastructure:** Educational spaces have been gradually expanded in line with the school's evolving needs.

In conclusion, the 2023-2024 academic year at École Sainte-Anne de Kigali ended on a note of hope and determination. With a clear vision, a strong commitment to students, adherence to IB standards, and unwavering dedication to Ubuntu values, ESAK continues its journey toward excellence, striving to empower its students as responsible and inspiring global citizens.

GALLERY





5. ECONOMIC SUPPORT



5.1.CONTEXT

The economic situation of refugees living in Rwanda, as well as that of vulnerable individuals from host communities, faces numerous challenges. These difficulties stem from various factors, including recurring global crises that have lasting repercussions, such as the excessive and prolonged rise in market prices.

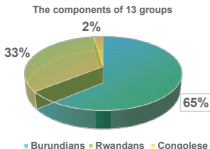
To address these challenges, the Economic Support Program provides essential assistance. This support includes training in entrepreneurship, strengthening skills in managing income-generating activities (IGAs), and providing in-kind grants.

The Economic Support Program is implemented in four key districts: Kirehe District in Rwanda's Eastern Province, home to the Mahama refugee camp; the city of Kigali; Huye District in the Southern Province; and Bugesera District in the southeastern part of the country.

5.2. ACHIEVEMENTS

5.2.1. Income-Generating Activities

In 2024, 170 beneficiaries (96 women and 74 men) and 13 groups, including 33% members from the host population, received grants to strengthen their financial autonomy and support sustainable economies. The total funding amounted to 92,258,200 RWF.



VOLUME OF LOANS AND GRANTS PER HOUSEHOLD 2016-2024

Year	Microcredit		Grants	
	Number of households	Amount RWF	Number of households	Amount RWF
2016	78	58 070 000	-	-
2017	279	52 134 400	-	-
2018	175	40 862 400	-	-
2019	67	16 684 000	-	-
2020	38	11 605 600	775	296 039 229
2021	220	52 713 262	472	72 116 334
2022	-	-	530	92 652 842
2023	-	-	700	172 771 400
2024	-	-	170	92 258 200
Total per type of financing	857	232 069 662	2 647	725 838 005

Source : Annual Reports 2016 - 2024



5.2.2. Community Savings

Most formal financial institutions struggle to reach the world's poorest populations, who critically need access to financial services. To address this issue, Maison Shalom supports community members by helping them form savings groups and lend funds to one another.

This innovative approach has created economic opportunities for nearly 1,708 people who are members of 94 Community Savings groups living in refugee camps and host communities.

5.2.3. Start-up Kits

During the year 2024, 203 graduates from various trades received start-up kits. These kits provide beneficiaries with the means to start income-generating activities, improve their economic situation, and meet their basic needs.

5.2.4. Entrepreneurship Training

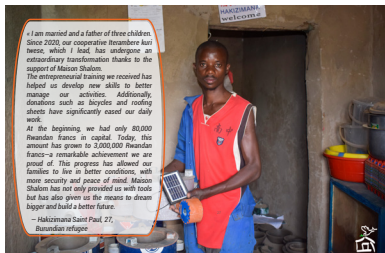
In 2024, 676 participants, including 205 from the host community and 471 from the refugee community, received training in entrepreneurship and income-generating activities (IGA) management, strengthening their skills to develop sustainable economic opportunities.

« I am married and a father of three children. Since 2020, our cooperative Iterambere kuri twese, which I lead, has undergone an extraordinary transformation thanks to the support of Maison Shalom.

The entrepreneurial training we received has helped us develop new skills to better manage our activities. Additionally, donations such as bicycles and roofing sheets have significantly eased our daily work.

At the beginning, we had only 80,000 Rwandan francs in capital. Today, this amount has grown to 3,000,000 Rwandan francs—a remarkable achievement we are proud of. This progress has allowed our families to live in better conditions, with more security and peace of mind. Maison Shalom has not only provided us with tools but has also given us the means to dream bigger and build a better future.

*— Hakizimana Saint Paul, 27,
Burundian refugee*





5.3. CHALLENGES

Resistance to change and self-sufficiency challenges :

In many contexts, a normalized dependence on external aid has been observed, making the transition to a self-sufficiency model more challenging. Many refugees and members of host communities have developed a prolonged dependency mindset, continuously expecting external solutions. This attitude limits their engagement in sustainable economic initiatives and hinders their autonomy.

Internal conflicts and a lack of collective solidarity :

Dependence on aid often generates tensions within communities, creating a divide between those striving for self-sufficiency and those who prefer to maintain the status quo. Collective initiatives frequently fail because some group members expect support without actively contributing, while still wanting to benefit equally from the efforts of their more engaged peers.

Low commitment and lack of long-term vision :

Some refugees, due to a lack of confidence in the future, adopt a dependency mindset that limits their ability to identify creative solutions or explore new economic opportunities. As a result, projects are seen as short-term opportunities rather than an investment in self-sufficiency and sustainable development.

Specific Challenges in the Agricultural Sector:

- **Climate Uncertainties:** Climate fluctuations impact crop productivity and resilience.
- **Insufficient irrigation :** The lack of efficient irrigation systems hinders the optimal use of arable land.
- **The lack of storage infrastructure :** At the second site, the absence of suitable storage sheds limits the preservation of harvests.
- **Logistical challenges:** The transportation of agricultural products from the second site to the first site remains challenging.
- **Pests :** Crops are regularly threatened by pests such as hippos, leading to significant losses.

Specific Challenges in the Livestock Sector

- **Insufficient infrastructure:** Livestock facilities require modernization to be optimal and sustainable.
- **Poultry farming :** Poultry farming, in particular, requires improved infrastructure to increase productivity and ensure better sanitary conditions.

This analysis highlights the main obstacles to overcoming in order to strengthen autonomy and promote sustainable economic solutions. An integrated approach, combining capacity building, adequate infrastructure, and mindset change, could help address these challenges.

GALLERY





6. PSYCHOSOCIAL SUPPORT



6.1. CONTEXT

Through its psychosocial support service, Maison Shalom has been able to provide two types of assistance: social assistance and psychological assistance through listening, orientation, and IEC (Information, Education, and Communication).

The individuals supported have been suffering from various traumas, often related to health problems or the difficulties of daily life. The precarious living conditions in which refugees live exacerbate their anxiety about the future, making them less independent.

However, through interventions such as therapeutic listening, support groups, and group psychotherapy, the Psychosocial Support Program team has been able to restore hope and confidence to these individuals.



6.2. ACHIEVEMENTS

6.2.1. Psychological Assistance

In 2024, individual and group psychotherapy sessions were organized for 504 beneficiaries showing signs of trauma or psychological and behavioral disturbances. These sessions helped individuals recover, regain their stability, and face the future with a clearer vision.

The approach aimed to create conducive conditions to assist beneficiaries in finding solutions to their problems and reconciling with their past. Cases that could not be addressed within the psychosocial support program were referred to specialized services, such as healthcare professionals (doctor, psychiatrist, neurologist) or other relevant programs (Education, Economic Support, etc.).

The sessions included topics related to resilience, personal development, well-being, and human rights. Presentations were followed by discussions, testimonies, and support groups. These activities enabled those still struggling with deep emotional wounds to benefit from the support of people who had already overcome their own challenges.

6.2.2. Social Assistance

The social assistance includes actions related to medical assistance, transportation expenses, food and non-food assistance, rent assistance, and health insurance. This support reached 943 beneficiaries.

The following table shows the results of the psychosocial support program interventions:

Types of assistance	Gender		Total
	Male	Female	
Psychological Assistance	240	264	504
Medical Assistance	17	11	28
Transportation Assistance	65	115	180
Food Assistance	7	20	27
Non-Food Assistance	7	20	27
Rental Assistance	6	18	24
Total	342	448	790



BENEFICIARIES OF HEALTH INSURANCE CARDS

#	DISTRICT	NUMBER OF BENEFICIARIES HOUSEHOLD HEADS	NUMBER OF DEPENDENTS	TOTAL
1	Bugesera	30	120	150
2	Kirehe	262	245	507
Total		292	365	657

« My life was in complete chaos; I was surrounded by bad influences that pushed me to use drugs. I dropped out of school, and the tensions with my parents made living together unbearable. At that time, I thought my life had no way out.

Then, I met Maison Shalom. This psychosocial support program was like a lifeline. Thanks to them, I took control of my life again. I had the opportunity to go back to school and take a computer course. Today, I am proud to say that I will be graduating this year. »

Ntwari Ken Donel - Burundian Refugee





6.3. CHALLENGES

Psychosocial support plays a crucial role in contexts where individuals and communities face crises, trauma, or prolonged stress. However, its implementation is often met with numerous challenges that vary depending on cultural, social, economic, and operational contexts.

Social stigma:

In some cultures, psychosocial disorders are seen as signs of weakness, taboos, or even a violation of honor. In our context, it is rare for adults, particularly men, to express their emotions or talk about their private lives. Many associate consulting a psychologist with shame, believing it is reserved for mentally ill individuals or those with weak minds.

Difficulty in identification :

Psychosocial issues are not always visible or easily detectable, especially in populations that tend to repress their emotions or suffering.

Limited resources:

The insufficiency of infrastructure and equipment, particularly the lack of suitable spaces that are a key therapeutic tool, limits the effectiveness of psychosocial support programs.

Insufficient indicators:

There is a lack of suitable tools to accurately assess the improvement in the psychosocial well-being of beneficiaries.

Lack of support for the interveners :

Professionals and volunteers involved in psychosocial support do not always receive training or support mechanisms to prevent burnout. They themselves are exposed to significant stress or secondary trauma, which can affect their effectiveness and personal well-being.



GALLERY





7. MAISON SHALOM OFFICES

7.1. Kirehe



Maison Shalom continues its efforts to improve the living conditions of refugees and local communities through various initiatives focused on education, sports, culture, and nutrition in the Mahama refugee camp. Here is an overview of the organization's key activities in this context:

The Maison Shalom office in Kirehe also serves as a vocational training center, where graduates of the 2024 Cohort received training in diverse fields such as tailoring, hairdressing and beauty, leather craftsmanship, carpentry, and heavy machinery operation. These programs aim to provide refugees with practical skills, enabling them to generate income and work towards self-sufficiency.

Additionally, training sessions were organized for teachers in rural schools, covering essential life skills and the management of teaching systems (SDSR). These sessions play a vital role in enhancing the quality of education within the camps and supporting young refugees in their academic journey.



Remedial classes and back-to-school programs have been implemented to help out-of-school girls reintegrate into the education system. As part of their training, learners specialized in leather craftsmanship, producing 78 pairs of shoes as a tangible outcome of their skills development.

Maison Shalom has also supported sports activities, with a team of young refugees from the Mahama tennis club winning a tournament in Kigali. Additionally, 24 young refugees participated in the "Genocide Memorial Tournament" for judo, contributing to their personal growth. Cultural activities were also organized to strengthen ties between refugees and the host community, fostering social cohesion.

During the Kirehe District Open Day, Maison Shalom was awarded second place in the finance and development sector, reflecting the positive impact of its initiatives in the region.

As in previous years, the organization celebrated the holiday season by distributing gifts to elderly individuals (aged 84–102) and children with disabilities, bringing joy and support to these vulnerable groups.

These various initiatives highlight Maison Shalom's commitment to improving the lives of refugees through education, vocational training, cultural, and humanitarian programs, while also promoting social integration and collaboration with the host community.





GALLERY





7.2. Huye



Throughout 2024, the team at the HUYE office continued its efforts to monitor and update data on beneficiaries of grants awarded in 2020 and 2022 in the sectors of Mbazi, Ngoma, Tumba, and Mukura. These activities aim to strengthen the empowerment of parents, vocational training graduates, and former grant recipients.

As part of this initiative, the HUYE office established nine new CECI groups (Community Savings and Internal Credit), in addition to a group already formed by parents in 2023. A significant initiative called "ITA KU MWANA WESE NK'UWAWWE", meaning "Take Care of Every Child as Your Own", led to the creation of CECI groups in the Ngoma sector, specifically in the Matyazo cell. In this area, out of eight villages, the office helped parents establish six CECI groups, bringing together a total of 143 members, all of whom are mothers.

Regarding vocational training graduates, mobilization and awareness-raising efforts were conducted for the 2022 cohort, who formed their own CECI group named "UBUMWE", meaning "Unity." The 2024 edition of the Open Day also provided an opportunity for graduates, particularly those specialized in tailoring, to showcase their creations at the Maison Shalom stand.



Additionally, the HUYE office collaborated with the head of the Huye Employment Service Center to connect graduates with this institution, enabling them to access available funding in the Huye district. Currently, the graduates are working on meeting the eligibility criteria to benefit from these funds dedicated to young entrepreneurs.

The establishment of CECI groups for graduates has also facilitated tracking their progress and identifying those in need of additional support. As a result, four graduates in mechanics received extra assistance.

Through CECI group meetings, the HUYE office team continued raising awareness among parents about positive parenting—one of the key objectives of the "ITA KU MWANA WESE NK'UWAWWE" initiative, aimed at parents of children attending Groupe Scolaire Matyazo. Weekly training sessions and home visits have been conducted to address issues of parental neglect observed in Matyazo cell, particularly within the indigenous community.

Thus, in 2024, the HUYE office remains committed to empowerment, awareness-raising, and family support, contributing to the socio-economic development of the region.





8. OASIS OF PEACE

Oasis of Peace is a social enterprise providing artistic creation services in fashion, as well as hospitality and catering services.

8.1 ELITE DESIGN



About Elite Design: Redefining African Elegance

Elite Design stands out as a key player in the fashion industry, showcasing the richness and diversity of African culture. The brand seamlessly blends tradition with modernity, offering unique creations for those who seek to wear garments infused with history and celebrating African identity.

Cultural Inspiration

Each Elite Design creation is born from deep inspiration drawn from Africa's diverse cultures. The designers carefully explore the continent's rich textile heritage, incorporating traditional patterns and vibrant colors. As a result, every garment becomes a visual narrative, reflecting the stories and traditions of various African communities while showcasing local craftsmanship.

Meticulous Craftsmanship

Quality and authenticity lie at the heart of Elite Design's manufacturing process. Each piece is meticulously crafted using preserved artisanal expertise, skillfully blending tradition and innovation. This attention to detail ensures unique and refined creations that stand out for their aesthetic appeal and durability.



Various Collections

Elite Design's collections embody the richness of Africa's cultural diversity. The brand offers a wide range of garments, from ceremonial outfits to casual everyday wear. Each collection is designed to seamlessly blend contemporary aesthetics with cultural authenticity, allowing everyone to find pieces suited for any occasion.

Social and Cultural Engagement

Elite Design is deeply committed to supporting African communities through various initiatives. By promoting local employment and preserving traditional crafts, the brand enables its customers to engage in a culturally enriching experience. In doing so, Elite Design celebrates Africa's diversity while contributing to the economic and social development of artisans and local communities.

Ultimately, Elite Design is more than just a fashion brand—it is a movement that redefines African elegance while honoring and preserving the continent's rich cultural heritage.



8.2. HOZAGARA RECEPTION CENTER IN MAHAMA

Maison Shalom is spearheading an ambitious project through its modern restaurant and accommodation center, aimed at bridging the gap between Mahama refugee camp and the host community. This center goes beyond providing quality lodging and dining services; it serves as a hub for learning and professional training.

By offering young people the opportunity to develop skills in areas such as culinary arts and hospitality services, Maison Shalom is creating employment prospects and stimulating the local economy.

The center features 12 comfortable rooms for guests, two multipurpose halls for conferences and events, and a restaurant serving carefully crafted meals. Additionally, an in-house bakery offers a variety of homemade pastries and baked goods, adding an artisanal touch to the visitor experience.

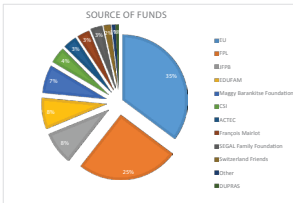
Ultimately, this initiative not only fosters economic growth in the region but also empowers youth and enhances the overall well-being of the local community.





9. FINANCES

SOURCE OF FUNDS	AMOUNT	VALUE	ALLOCATION
	RWF	EUROS	
EUROPEAN UNION	1,101,192,170	777,917	Trades, in-kind grants for micro-projects
PARTAGE DU LUXEMBOURG FOUNDATION	793,699,317	560,695	Trades,secondary,university, acquisition Oasis of Peace
ACTEC NGO	105,623,839	74,616	Economic support, university and Trades
JEAN FRANCOIS PETERBROECK FOUNDATION	158,823,346	112,293	Psychosocial support and investments
DEWILDE FAMILY	99,085,000	70,000	General operating expenses
MAGGY BARANKITSE FOUNDATION	215,273,664	152,076	Construction of preschool & Secondary school of Sainte-Anne de Kigali
SEGAL FAMILY FOUNDATION	88,424,560	62,466	General operating expenses
PAUL GERIN-LAJOIE FOUNDATION	238,529,654	168,595	Girls education, Primary,secondary and Trades
M. FRANCOIS MAILLOT	96,942,500	68,483	General operating expenses
CHRISTIAN SOLIDARITY INTERNATIONAL	127,450,779	90,842	Preschool and primary education
MICRO PROJECTS LOAN REPAYMENT	128,400	91	Economic support
DUPRAS	24,041,541	16,984	University education
AYUDAME FRIENDS	13,950,000	9,855	General operating expenses
AFRICAN SISTERS FOR INFORMATION KNOWLEDGE & EMPOWERMENT (ASKE)	5,268,750	3,722	Preschool and primary education
DONATIONS FROM PRIVATE FRIENDS	86,151,541	60,850	General operating expenses
SWISS FRIENDS OF MAISON SHALOM	50,168,376	35,441	General operating expenses
TOTAL	3,206,180,784	2,264,955	



ACKNOWLEDGEMENTS



Maison Shalom International | Annual Report | 2024



- Oasis of Peace Initiatives Suède (cf Mugisha Anastasie)
- Oasis of Peace Initiatives USA (cf Yungenge Thierry)
- Future 21
- Friends from Belgium
- The parish of Gundelshem
- Friends from Switzerland of Maison shalom
- Friends from Ayudame
- The parish of Neuveville
- The family of François Mailrot
- The family of Dewilde
- Friends from Italy
- Friends from Germany



L'éducation de qualité pour tous



LOCAL DONATIONS



EQUITY BANK RWANDA
Name : Maison Shalom
Account Number in RWFF : 4001200471140
Account Number in USD : 4001200471140
Account Number in EUR : 4001200471140
SWIFT : EQURWXXX
Name of bank : EQUITY BANK RWANDA LIMITED
Address : Grand Prebena Plaza, 690 Avenue de la suite



BANQUE DE KIGALI (BK)
Name : Maison Shalom
Account Number in RWFF : 100011001781
Account Number in USD : 00040001940028
Account Number in EUR : 00040001940028
SWIFT : BK04RWXX
Name of bank : BANK OF KIGALI
Address : 3125 PDR, 800 4 Ave, Kigali

INTERNATIONAL DONATIONS

(Tax deduction)



Après avoir reçu votre accord de soutien

Fondation Roi Baudouin - Belgique

Bank : BNP Paribas Fortis / Bruxelles
Account Number BE16 0000 0000 2404
SWIFT or BIC Code : GIBABEBB
Communication : 013/1060/00209 MaisonShalom



Fondation Roi Baudouin - USA

Bank : JP Morgan Chase, 270 Park Avenue, New York, NY, 10017
Routing Number : 021000221 (San Francisco, from within the United States)
SWIFT or BIC Code : CHASUS33 (for bank fees from outside the United States)
Beneficiary : Myriad USA, 531 Fifth Avenue, Suite 2400, New York, NY 10116
Account Number : 900202008
Communication : FR-FJP US Fund / MaisonShalom



SCAN TO SUPPORT



*Maison Shalom
International*

RN 15 - kk 432
Nyanza ,Kicukiro District
B.P 1131 Kigali/Rwanda